



people spaces places

Bromsgrove Play Assessment

for Bromsgrove District Council

11-09-23

Updated 16-05-24

Updated 28-08-24

Updated 29-11-24



Table of Contents



people spaces places

- Introduction
 - ↳ Methodology
- Developing the Accessibility Model
- Analysis
 - ↳ Accessibility & IMD
 - ↳ Accessibility & Health Deprivation
 - ↳ Accessibility & Population aged 12 & Under
 - ↳ Accessibility & Population of Overweight 4-5 year olds
 - ↳ Accessibility & Population of Overweight 10-11 year olds
 - ↳ Play Condition Rating
 - ↳ Retained vs Lost Provision
 - ↳ Residents Perception of Quantity

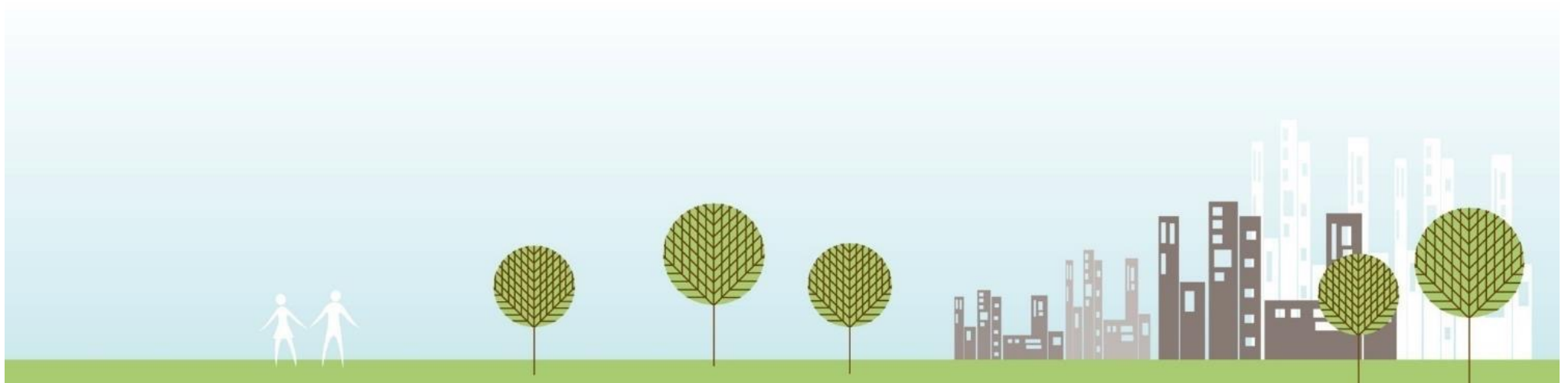


Table of Contents



people spaces places

- Opportunities to Address Deficiencies
 - ↳ Enhancing from Local to Neighbourhood Provision
 - ↳ Sites Allocated for Housing Developments
- Summary



Introduction

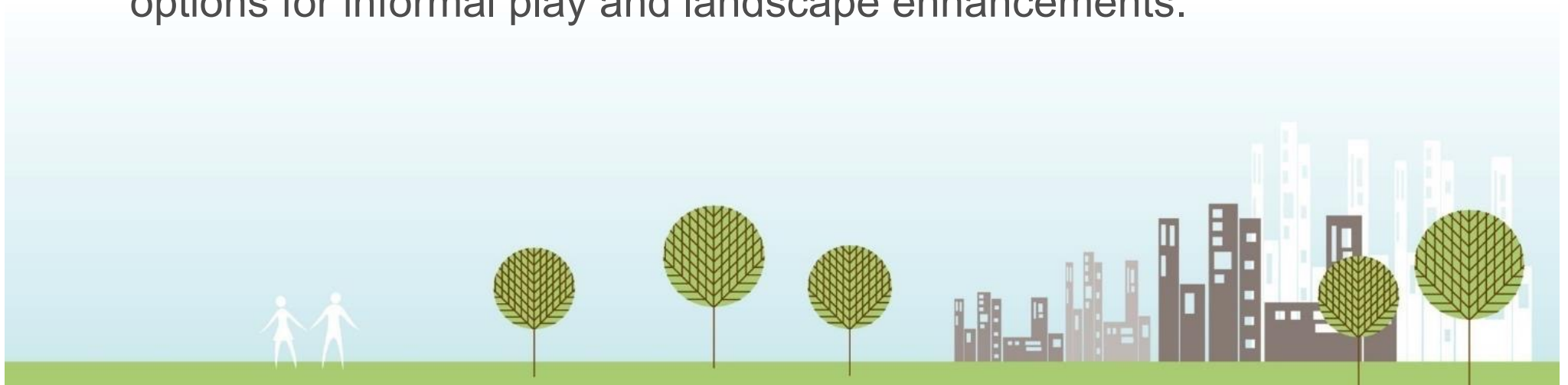


people spaces places

CFP was commissioned to carry out an assessment of the accessibility of equipped children's play provision in Bromsgrove District.

This was based on earlier work as part of the Leisure and Culture Strategy and Open Space Study.

The scope of the study includes equipped children's play for infants, juniors and teenagers and to look at rationalisation and the potential options for informal play and landscape enhancements.



Methodology



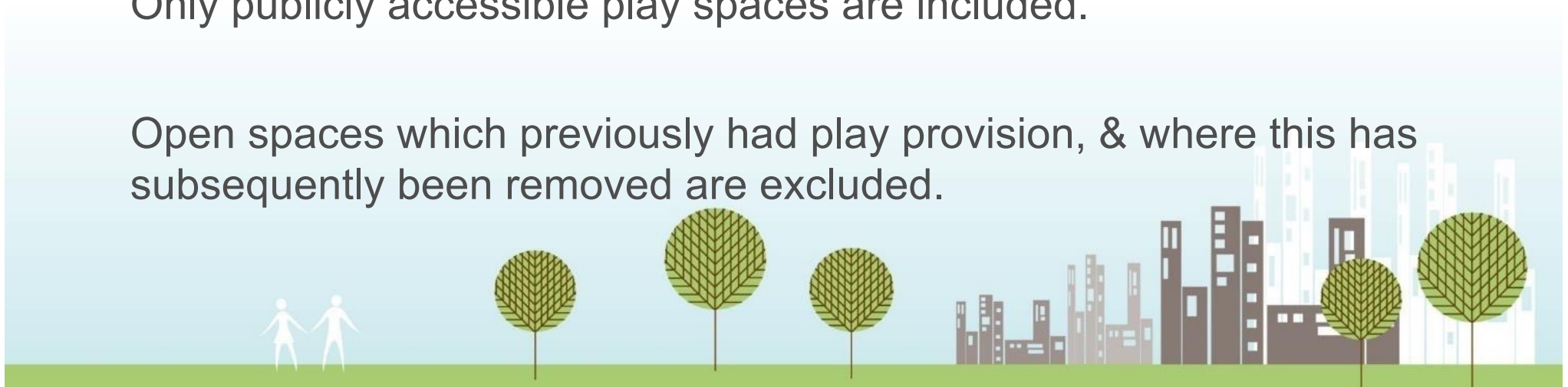
people spaces places

The first step was establishing a full GIS dataset of Bromsgrove District play sites based on updating the work carried out as part of the Leisure and Culture Strategy.

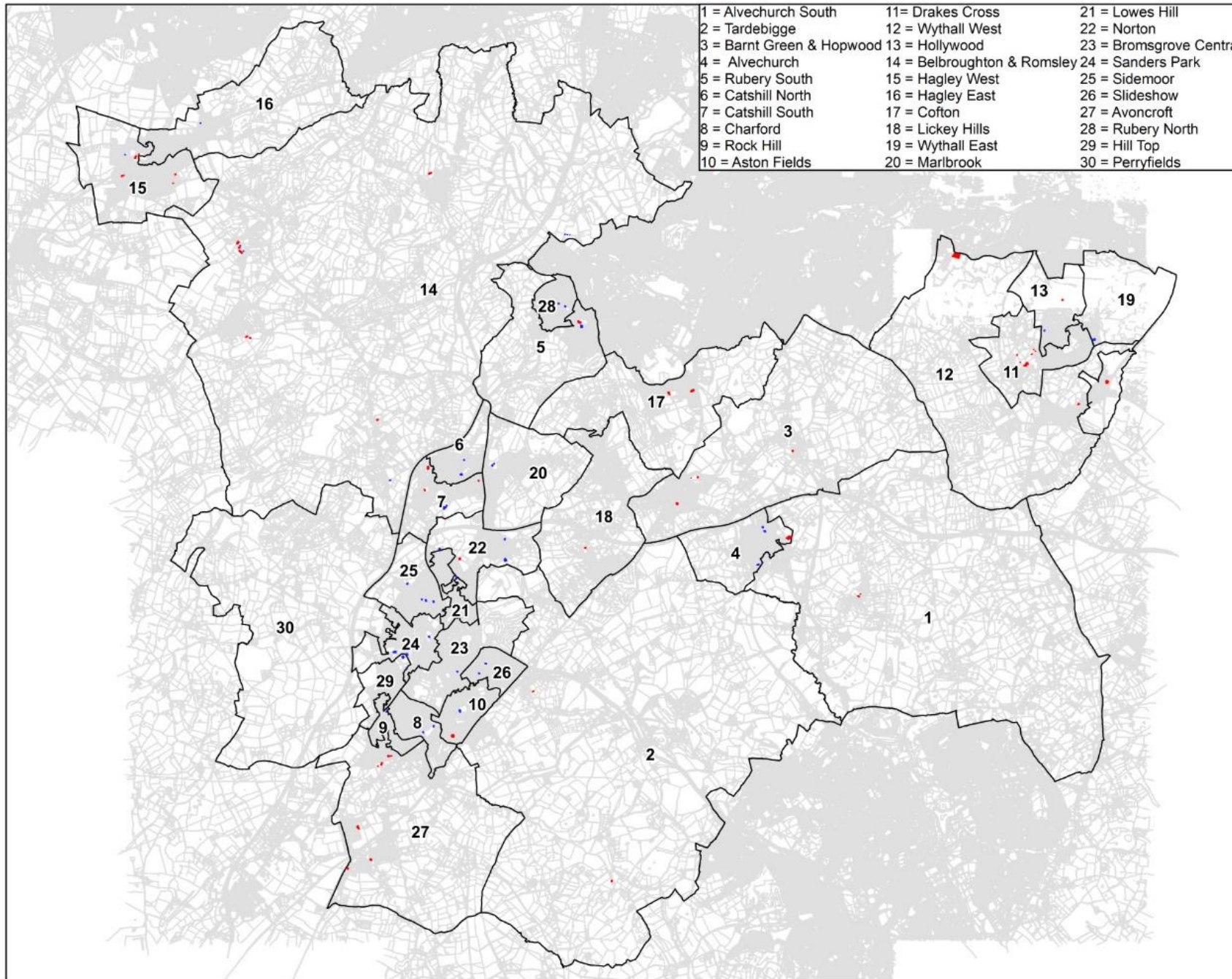
Play spaces have been plotted as polygons in GIS. Each polygon reflects a play site & has been cross referenced with BDC management and maintenance data. Parish Council provision is included.

Only publicly accessible play spaces are included.

Open spaces which previously had play provision, & where this has subsequently been removed are excluded.



All Play Provision



Redditch and Bromsgrove Play

Figure 1
All Play Provision in
Bromsgrove

Legend

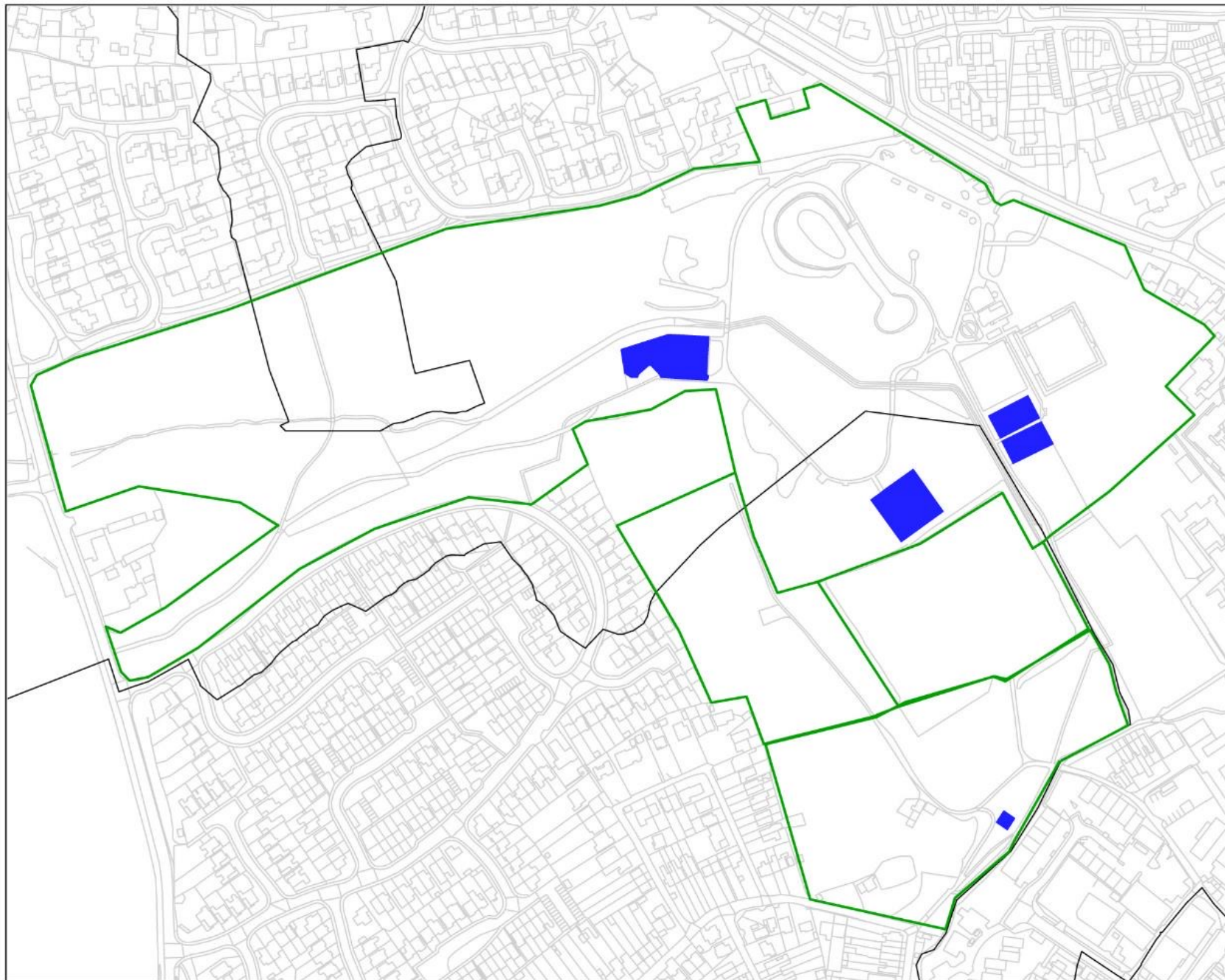
- BDC owned play provision
- Not BDC owned play provision
- Bromsgrove ward & district boundaries
- OS Base

Contains OS data © Crown copyright and database right 2021

Drawn by: GA	Checked by: AS	Date: 23/08/23
-----------------	-------------------	-------------------







Sanders Park Play Provision



Redditch and Bromsgrove Play

Figure 1a
Sanders Park Example

Legend

-  Play Provision
-  Sanders Park Boundary
-  Bromsgrove ward & district boundaries
-  OS Base

Contains OS data © Crown copyright and database right 2021

Drawn by:	Checked by:	Date:
GA	AS	23/08/23



Residential Mapping



people spaces places

- Accessibility mapping is focused on access by residential properties across Bromsgrove (excluding industrial, commercial & other uses)
- The data was extracted as residential point data from BLPUs Classification dataset.
- The data has been used to better understand how many residential properties have access to play provision
- Accessibility has been cross referenced with demographic health data including: IMD; Health Deprivation & Disability; Population aged 12 & Under and Child Obesity.



All Play Provision by Ward

Ward	Play Site ID	Play Site Name	Provision	Hierarchy	Ownership	
1	Alvechurch South	32	Rowney Green Recreation Ground Play Area	Toddler, Junior	Local	Alvechurch PC
		1	Rowney Green Recreation Ground Basketball Hoop	Teenager	Local	Alvechurch PC
2	Alvechurch Village	661	George Road Playing Field	Junior	Local	BDC
		35	Wiggin Memorial Playing Fields Play Area	Toddler, Junior, Teenager	Neighbourhood	Alvechurch PC
		4	Swans Length MUGA	Teenager	Neighbourhood	BDC
		576	Wiggins Memorial Playing Fields Outdoor Fitness	Teenager	Neighbourhood	Alvechurch PC
		33	Swans Length Play Area	Toddler, Junior, Teenager	Neighbourhood	BDC
3	Aston Fields	37	Aston Fields Recreation Ground Play Area	Toddler, Junior	Neighbourhood	BDC
		144	Compass Way Play Area	Toddler, Junior	Local	3rd Party
		5	Aston Fields Recreation Ground Basketball Court	Teenager	Neighbourhood	BDC
4	Avoncroft	151	Heath Close Play Area	Toddler	Local	Stoke PC
		39	Stoke Parish Playing Field Play Area	Toddler, Junior, Teenager	Local	Stoke PC
		40	Stoke Prior Parish Play Area	Toddler, Junior	Local	Stoke PC
		419	Shaw Lane Play Area	Toddler, Junior	Local	Stoke PC
		572	Henbrook Gardens Play Area	Toddler, Junior	Local	Stoke PC
		6	Stoke Parish Playing Field Basketball Court	Teenager	Local	Stoke PC
		7	Stoke Prior Parish Basketball Court	Teenager	Local	Stoke PC
		583	Stoke Prior Parish Outdoor Fitness	Teenager	Local	Stoke PC
5	Barnt Green & Hopwood	41	Barnt Green Parish Council Childrens Play Area Millennium Park	Toddler, Junior, Adult Fitness	Neighbourhood	Barnt Green PC
		588	Barnt Green Sports Ground Childrens Play Area Bittell Road Playing Fields	Teenager	Neighbourhood	Barnt Green PC
		655	Hopwood Community Centre Playing fields	Toddler, Junior, Teenager	Local	Alvechurch PC

All Play Provision by Ward

Ward	Play Site ID	Play Site Name	Provision	Hierarchy	Ownership	
6	Belbroughton & Romsley	49	St Kenelms Recreation Ground Play Area	Toddler, Junior, Teenager, Adult Fitness	Neighbourhood	Romsley PC
		48	Belbroughton Recreation Ground Play Area	Toddler, Junior	Local	Belbroughton PC
		43	Bourneheath Village Hall Recreation Ground Play Area	Toddler, Junior	Neighbourhood	BDC
		44	Fairfield Villa FC Play Area	Toddler, Junior	Local	Belbroughton PC
		42	Pool Furlong Playing Field Assault Course	Teenager, Adult Fitness	Neighbourhood	Clent PC
		10	Pool Furlong Playing Field Skatepark	Teenager	Neighbourhood	Clent PC
		8	Pool Furlong Playing Field Basketball Hoop	Teenager	Neighbourhood	Clent PC
		9	St Kenelms Recreation Ground Skatepark	Teenager	Neighbourhood	Romsley PC
		11	Belbroughton Recreation Ground Skatepark	Teenager	Local	Belbroughton PC
		46	Pool Furlong Playing Field Play Area	Teenager	Neighbourhood	BDC
		595	Pool Furlong Outdoor Fitness	Teenager	Local	BDC
		650	Boleyn Road	Junior, Adult	Local	BDC
656	Holy Cross Play Area	Todder, Junior	Local	Clent PC		
7	Bromsgrove Central	50	Fordhouse Road Play Area	Toddler, Junior	Local	BDC
8	Catshill North	51	Lingfield Walk	Toddler, Junior	Neighbourhood	BDC
		52	Goodwood Road Play Area (Same as Lingfield Walk)	Toddler, Junior	Neighbourhood	BDC
9	Catshill South	65	Shelley Close	Junior, Teenager	Neighbourhood	BDC
		54	Catshill Village Meadow Play Area	Toddler, Junior	Local	Catshill Village Trust
		364	Acorn Road Play Area	Toddler, Junior	Local	BDHT
		453	Kingcup Close Play Area	Toddler, Junior	Local	3rd Party
10	Charford	55	Charford Recreation Ground Play Area	Toddler, Junior, Teenager	Neighbourhood	BDC
		13	Charford Recreation Ground MUGA	Teenager	Neighbourhood	BDC
11	Cofton	368	Cofton Hackett Community Park Playground	Toddler, Junior	Local	Cofton Hackett PC
		373	Aero Way Play Area	Toddler, Junior	Local	3rd Party
12	Drakes Cross	654	Wythall Park	Toddler, Junior, Teenager	Neighbourhood	Wythall Community Association

All Play Provision by Ward

Ward	Play Site ID	Play Site Name	Provision	Hierarchy	Ownership	
13	Hagley East	57	Kinver Drive Play Area	Toddler, Junior	Local	BDC
14	Hagley West	58	The Coppice Play Area	Toddler, Junior	Local	BDC
		60	Chestnut Drive Play Area	Toddler, Junior	Local	3rd Party
		61	The Greenway Play Area	Toddler, Junior	Local	3rd Party
		499	Amphlett Close Play Area	Toddler	Local	3rd Party
		501	Todd Gardens Play Area	Toddler Junior	Local	3rd Party
		597	Hagley Community Centre Playing Fields Skatepark	Teenager	Neighbourhood	Hagley PC
		596	Hagley Community Centre Playing Fields Outdoor Fitness	Teenager	Local	Hagley PC
15	Hill Top	74	Sanders Park MUGAs	Teenager	Neighbourhood	BDC
		20	Sanders Park Basketball Court 2	Teenager	Neighbourhood	BDC
16	Hollywood	63	Hollywood Drive Play Area	Toddler, Junior	Local	3rd Party
		62	May Farm Close Play Area	Toddler	Local	BDC
17	Lickey Hills	513	Blackwell Park	Toddler, Junior	Neighbourhood	Lickey and Blackwell PC
18	Marlbrook	64	Braces Lane Recreation Ground Play Area	Toddler, Junior	Neighbourhood	BDC
		21	Braces Lane Recreation Ground Basketball Court	Teenager	Neighbourhood	BDC
19	Norton	657	Upland Grove Play Area	Toddler, Junior	Local	BDC
		529	Norton Farm	Toddler, Junior	Local	3rd Party
		31	Upland Grove Basketball Court	Teenager	Local	BDC
		113	Lickey End Recreation Ground MUGA	Teenager	Neighbourhood	BDC
		609	Foxglove Way Play Area	Junior	Local	BDC
		652	Barnsley Hall Play Area	Todder, Junior	Neighbourhood	BDC
20	Rock Hill	69	Villiers Road Play Area	Toddler	Local	BDC
21	Rubery North	70	Callowbrook Lane Play Area	Toddler, Junior, Teenager	Neighbourhood	BDC
		24	Callowbrook Lane MUGA	Teenager	Neighbourhood	BDC
22	Rubery South	71	St Chads Rubery Recreation Ground Play Area	Toddler, Junior, Teenager	Neighbourhood	BDC
		25	St Chads Park Rubery Recreation Ground MUGA & Skatepark	Teenager	Local	BDC

All Play Provision by Ward

Ward	Play Site ID	Play Site Name	Provision	Hierarchy	Ownership
23 Sanders Park	72	Market Street Recreation Ground Play Area	Toddler, Junior	Neighbourhood	BDC
	73	Sanders Park Play Area	Toddler, Junior	Neighbourhood	BDC
24 Sidemoor	30	King George V Playing Field MUGA	Teenager	Neighbourhood	BDC
	651	Silverdale Play Area	Toddler	Local	BDC
	653	Laurel Grove/Beech Grove	Todder, Junior	Neighbourhood	BDC
25 Slideslow	78	Arundel Road Play Area	Toddler, Junior	Local	BDC
	77	The Oakalls	Toddler, Junior	Neighbourhood	BDC
26 Tardebigge	79	Penmanor Playing Field Play Area	Toddler, Junior	Local	Finstall PC
	560	Bentley Village Hall Play Area	Toddler, Junior	Local	Bentley Pouncefoot PC
27 Wythall East	80	Hollywood Lane Play Area	Toddler, Junior	Local	BDC
	568	Selsdon Close	Toddler, Junior	Local	3rd Party
28 Wythall West	81	Walkers Heath Park Play Area	Toddler, Junior, Teenager	Local	Birmingham CC
	405	Burnham Road Childrens Play Area	Junior	Local	3rd Party

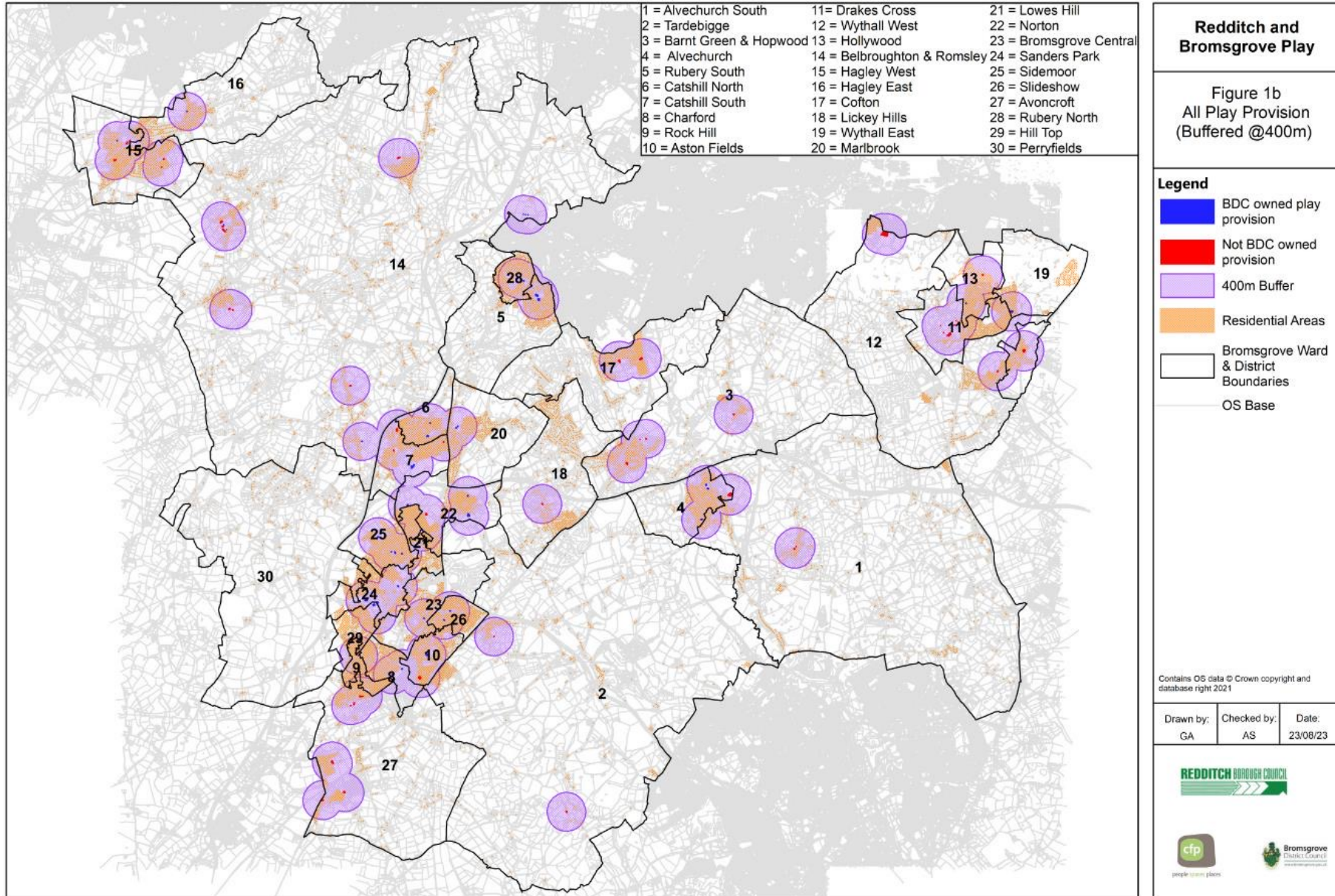
It should be noted that a significant number of the supply of play areas within the District are not under the direct control of the District Council. This reliance on external bodies or organisations to manage certain parks presents a potential vulnerability, as changes in their management arrangements, priorities, or resources could impact the availability and quality of these spaces.

Settlement Hierarchy

Hierarchy Name	Wards
Main Town	Aston Fields
	Bromsgrove Central
	Charford
	Hill Top
	Loves Hill
	Norton
	Rock Hill
	Sanders Park
	Sidemoor
	Slideslow
Large Settlements	Alvechurch
	Barnt Green & Hopwood
	Catshill North
	Catshill South
	Drakes Cross
	Hagley East
	Hagley West
	Hollywood
	Lickey Hills
	Marlbrook
	Rubery North
	Rubery South
	Wythall East
Wythall West	
Small Settlements	Alvechurch South
	Avoncroft
	Belbroughton & Romsley
	Cofton
	Perryfields
Tardebigge	

All Play Buffered at 400m

35.6% of households don't have access within 400m



Analysis – All Play Provision

Households without play provision within 400m by ward.

Ward	No	%
Lickey Hills	1138	92.5%
Perryfields	554	86.7%
Tardebigge	1097	74.8%
Alvechurch South	928	65.5%
Belbroughton & Romsley	1881	61.3%
Wythall West	784	59.4%
Marlbrook	700	56.0%
Wythall East	600	47.1%
Hill Top	586	46.9%
Drakes Cross	626	44.3%
Hagley East	464	42.1%
Lowes Hill	620	39.6%
Cofton	523	36.3%
Sanders Park	698	35.8%
Rubery South	477	35.5%
Bromsgrove Central	549	33.7%
Barnt Green & Hopwood	429	33.0%
Slideslow	358	28.1%
Rubery North	416	27.9%
Avoncroft	467	26.6%
Charford	372	23.8%
Hagley West	294	15.4%
Hollywood	192	14.0%
Norton	192	13.3%
Aston Fields	201	12.8%
Alvechurch Village	146	11.2%
Rock Hill	130	11.0%
Sidemoor	222	10.9%
Catshill South	77	5.4%
Catshill North	30	2.4%

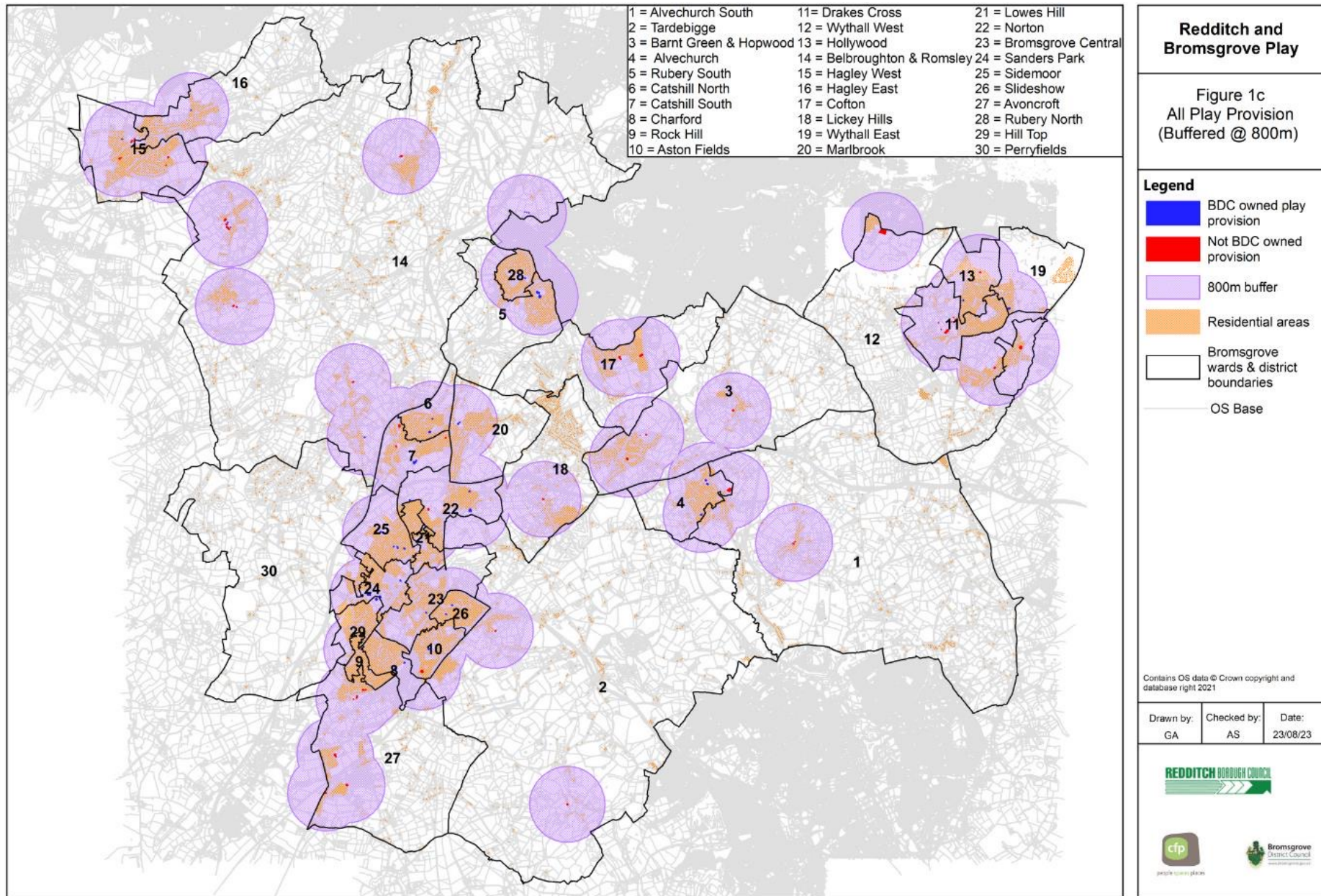
Analysis – All Play Provision

Households without play provision within 400m by Settlement Hierarchy.

Hierarchy Name	Wards	No	%
Main Town	Hill Top	586	46.9%
	Lowes Hill	620	39.6%
	Sanders Park	698	35.8%
	Bromsgrove Central	549	33.7%
	Slideslow	358	28.1%
	Charford	372	23.8%
	Norton	192	13.3%
	Aston Fields	201	12.8%
	Rock Hill	130	11.0%
	Sidemoor	222	10.9%
Large Settlements	Lickey Hills	1138	92.5%
	Wythall West	784	59.4%
	Marlbrook	700	56.0%
	Wythall East	600	47.1%
	Drakes Cross	626	44.3%
	Hagley East	464	42.1%
	Rubery South	477	35.5%
	Barnt Green & Hopwood	429	33.0%
	Rubery North	416	27.9%
	Hagley West	294	15.4%
	Alvechurch	146	11.2%
	Hollywood	192	14.0%
	Catshill South	77	5.4%
	Catshill North	30	2.4%
Small Settlements	Perryfields	554	86.7%
	Tardebigge	1097	74.8%
	Alvechurch South	928	65.5%
	Belbroughton & Romsley	1881	61.3%
	Cofton	523	36.3%
	Avoncroft	467	26.6%

All Play Buffered at 800m

12.3% of households don't have access within 800m



Analysis – All Play Provision

Households without play provision within 800m by ward.

Ward	No	%
Alvechurch South	795	56.1%
Lickey Hills	661	53.7%
Perryfields	340	53.2%
Tardebigge	693	47.3%
Belbroughton & Romsley	1220	39.8%
Wythall West	445	33.7%
Wythall East	396	31.1%
Cofton	210	14.6%
Barnt Green & Hopwood	171	13.2%
Marlbrook	134	10.7%
Avoncroft	158	9.0%
Rubery South	63	4.7%
Hagley East	37	3.4%
Lowes Hill	45	2.9%
Alvechurch Village	22	1.7%
Hagley West	30	1.6%
Catshill North	18	1.5%
Drakes Cross	3	0.2%
Bromsgrove Central	3	0.2%
Aston Fields	0	0.0%
Catshill South	0	0.0%
Charford	0	0.0%
Hill Top	0	0.0%
Hollywood	0	0.0%
Norton	0	0.0%
Rock Hill	0	0.0%
Rubery North	0	0.0%
Sanders Park	0	0.0%
Sidemoor	0	0.0%
Slideslow	0	0.0%

Analysis – All Play Provision

Households without play provision within 800m by Settlement Hierarchy.

Hierarchy Name	Wards	No	%
Main Town	Lowes Hill	45	2.9%
	Bromsgrove Central	3	0.2%
	Hill Top	0	0.0%
	Sanders Park	0	0.0%
	Slideslow	0	0.0%
	Charford	0	0.0%
	Norton	0	0.0%
	Aston Fields	0	0.0%
	Rock Hill	0	0.0%
	Sidemoor	0	0.0%
Large Settlements	Lickey Hills	661	53.7%
	Wythall West	445	33.7%
	Wythall East	396	31.1%
	Barnt Green & Hopwood	171	13.2%
	Marlbrook	134	10.7%
	Rubery South	63	4.7%
	Hagley East	37	3.4%
	Catshill North	30	2.4%
	Alvechurch	22	1.7%
	Hagley West	30	1.6%
	Drakes Cross	3	0.2%
	Rubery North	0	0.0%
	Hollywood	0	0.0%
	Catshill South	0	0.0%
Small Settlements	Alvechurch South	795	56.1%
	Perryfields	340	53.2%
	Tardebigge	693	47.3%
	Belbroughton & Romsley	1220	39.8%
	Cofton	210	14.6%
	Avoncroft	158	9.0%

Hierarchy



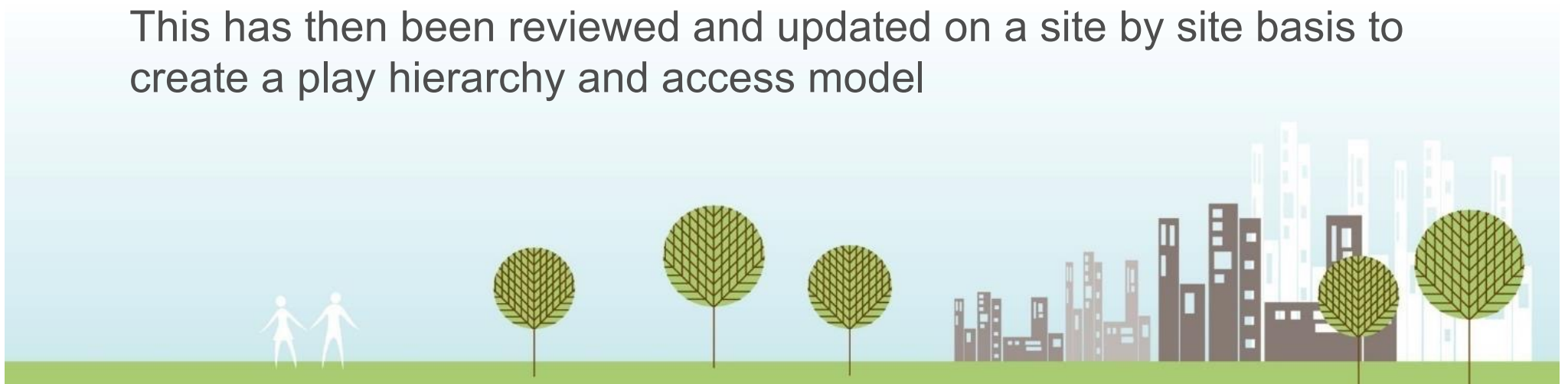
people spaces places

BDC uses a 'P' rating as a way of categorising play facilities based on size, use and type. This is used to determine inspection frequency.

Each site has been assigned a play hierarchy based on their 'p rating'.

- P3/P4 – Smaller sites and standalone ballcourts - Local
- P1/P2 – 'Main' / larger sites – Neighbourhood

This has then been reviewed and updated on a site by site basis to create a play hierarchy and access model



Hierarchy



people spaces places

- The play hierarchy has been reviewed against the Fields in Trust guidelines for outdoor space.
- 400m = 5-minute walk (Local)
- 800m = 10-minute walk (Neighbourhood)
- Locally Equipped Area for Play (LEAP) aimed at children who can go out to play independently should be within 400m.
- Neighbourhood Equipped Area for Play (NEAP) aimed at older children should be within 1000m



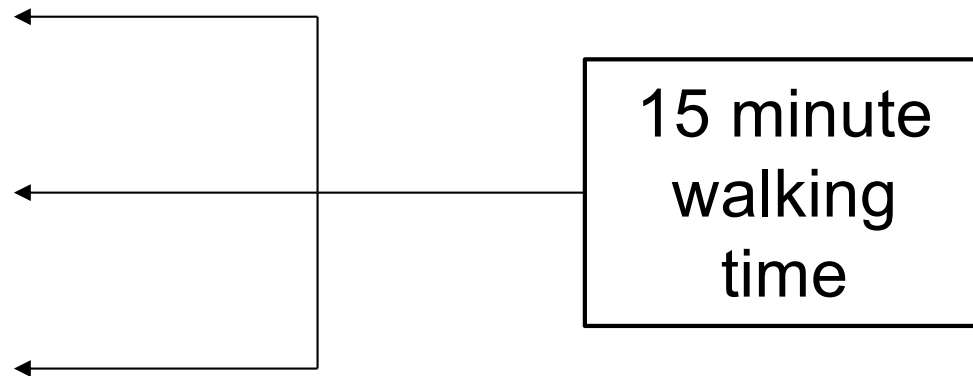
GI Standards



people spaces places

National Access to Natural Greenspace Standard

- Doorstep = 200m
- Local = 300m
- Neighbourhood = 1km
- District = 5km
- Sub-Regional = 10km



Bromsgrove Accessibility Model

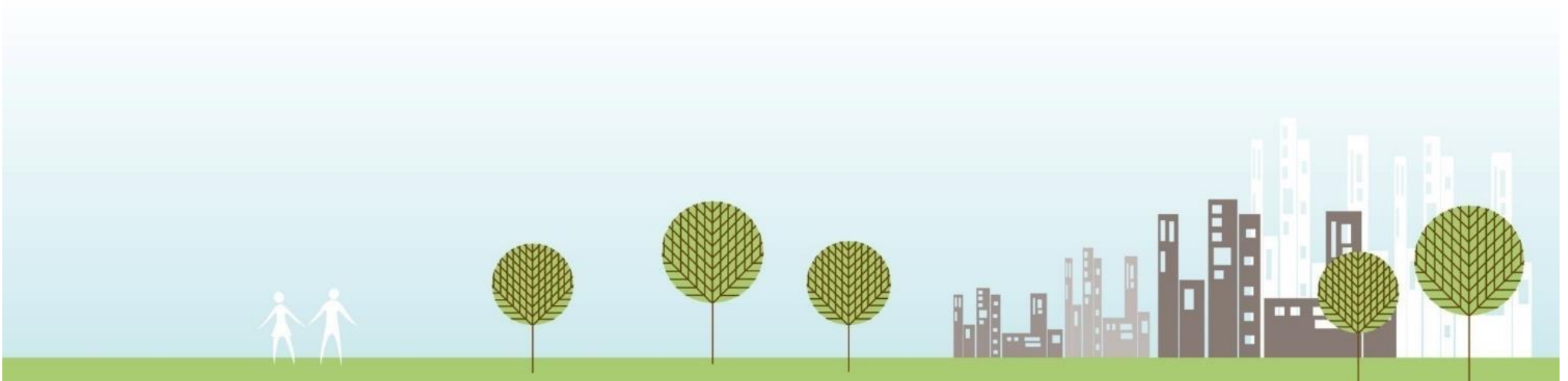


people spaces places

In the assessment that follows we have used an accessibility model for Bromsgrove that is broadly comparable with national guidelines:

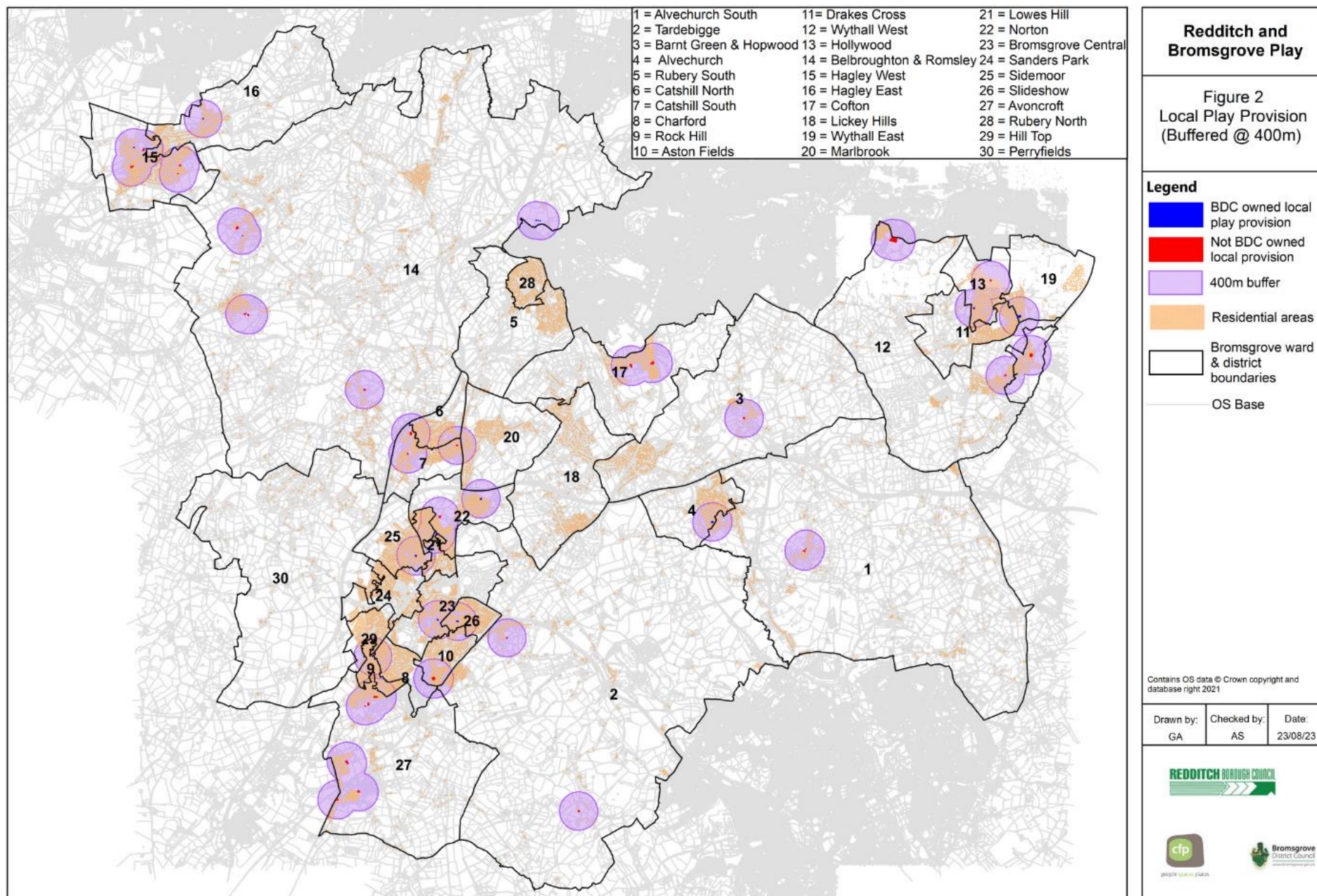
- Local Play Spaces – 400m (5 mins walking time)
- Neighbourhood Play Spaces – 800m (10 mins walking time)

This has been applied to the subsequent accessibility analysis



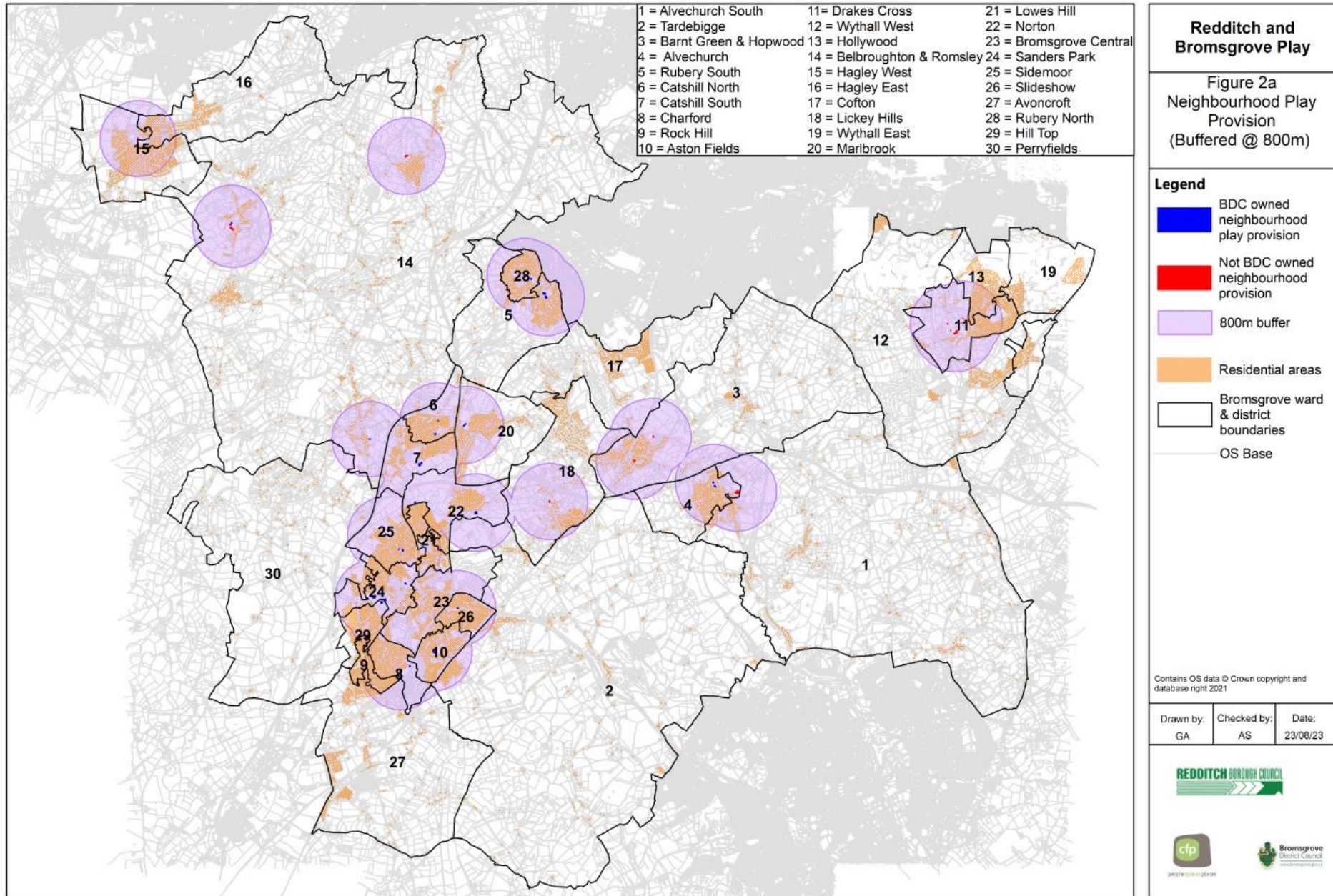
Local Play Buffered at 400m

60.2% of households don't have access to local play provision within 400m



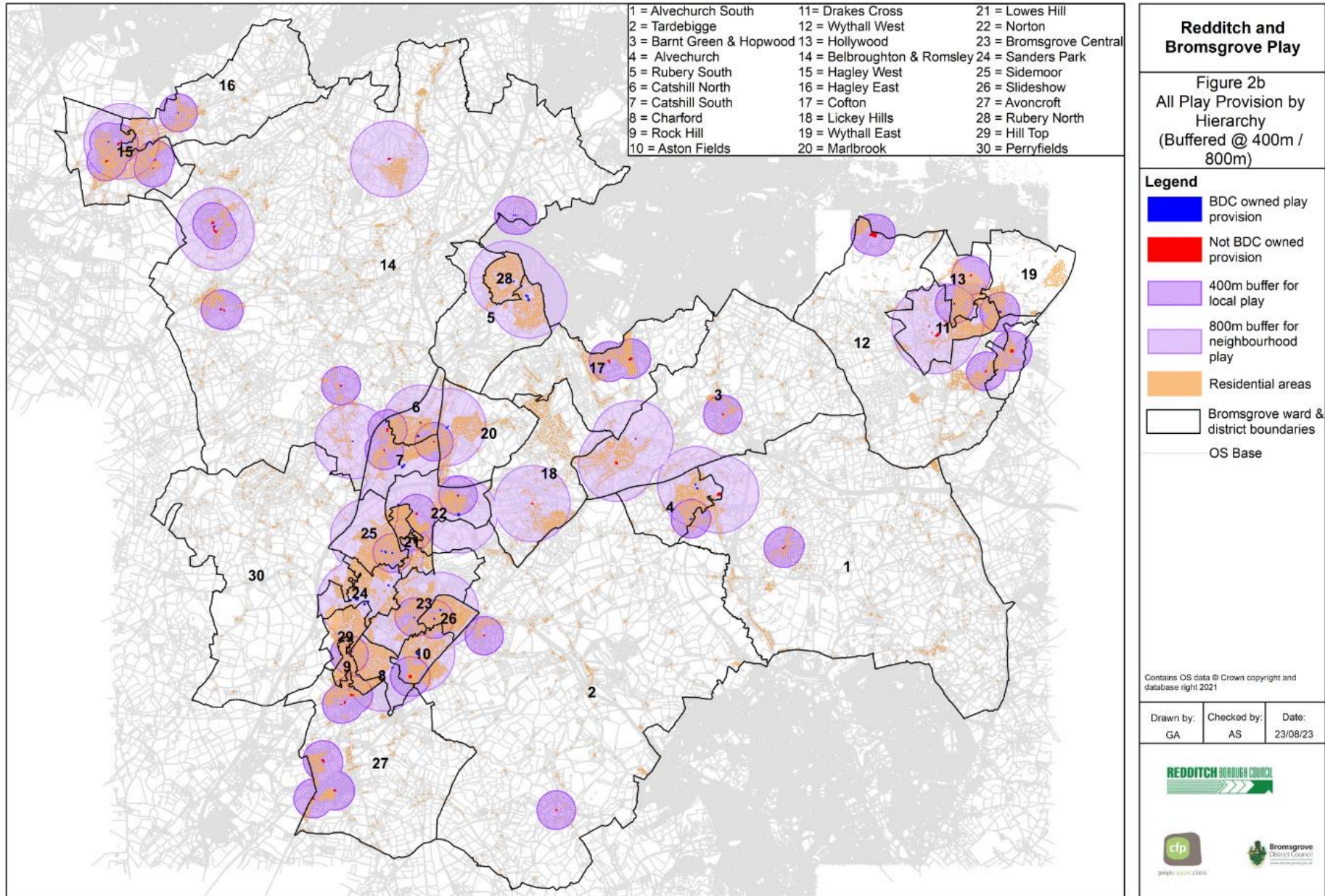
Neighbourhood Play Buffered at 800m

32.5% of households don't have access to neighbourhood play provision within 800m.



Accessibility Model

18.3% of households don't have access play provision using the access model.



Accessibility Model Analysis

Households without access to play provision within using access model by ward:

Ward	No	%
Alvechurch South	860	60.7%
Wythall West	734	55.6%
Lickey Hills	662	53.8%
Perryfields	340	53.2%
Tardebigge	773	52.7%
Belbroughton & Romsley	1457	47.5%
Wythall East	600	47.1%
Cofton	501	34.8%
Avoncroft	450	25.6%
Barnt Green & Hopwood	260	20.0%
Lowes Hill	279	17.8%
Marlbrook	215	17.2%
Hagley East	146	13.2%
Hollywood	165	12.0%
Hagley West	170	8.9%
Drakes Cross	122	8.6%
Rock Hill	93	7.9%
Norton	85	5.9%
Hill Top	59	4.7%
Rubery South	63	4.7%
Alvechurch Village	51	3.9%
Catshill North	18	1.5%
Bromsgrove Central	5	0.3%
Aston Fields	0	0.0%
Catshill South	0	0.0%
Charford	0	0.0%
Rubery North	0	0.0%
Sanders Park	0	0.0%
Sidemoor	0	0.0%
Slideslow	0	0.0%

Analysis – All Play Provision

Households without access to play provision within using access model by Settlement Hierarchy.

Hierarchy Name	Wards	No	%
Main Town	Lowes Hill	279	17.8%
	Rock Hill	93	7.9%
	Norton	85	5.9%
	Hill Top	59	4.7%
	Bromsgrove Central	5	0.3%
	Sanders Park	0	0.0%
	Slideslow	0	0.0%
	Charford	0	0.0%
	Aston Fields	0	0.0%
	Sidemoor	0	0.0%
Large Settlements	Wythall West	734	55.6%
	Lickey Hills	662	53.8%
	Wythall East	600	47.1%
	Barnt Green & Hopwood	260	20.0%
	Marlbrook	215	17.2%
	Hagley East	146	13.2%
	Hollywood	165	12.0%
	Hagley West	170	8.9%
	Drakes Cross	122	8.6%
	Rubery South	63	4.7%
	Alvechurch	51	3.9%
	Catshill North	18	1.5%
	Rubery North	0	0.0%
	Catshill South	0	0.0%
Small Settlements	Alvechurch South	860	60.7%
	Perryfields	340	53.2%
	Tardebigge	773	52.7%
	Belbroughton & Romsley	1457	47.5%
	Cofton	501	34.8%
	Avoncroft	450	25.6%

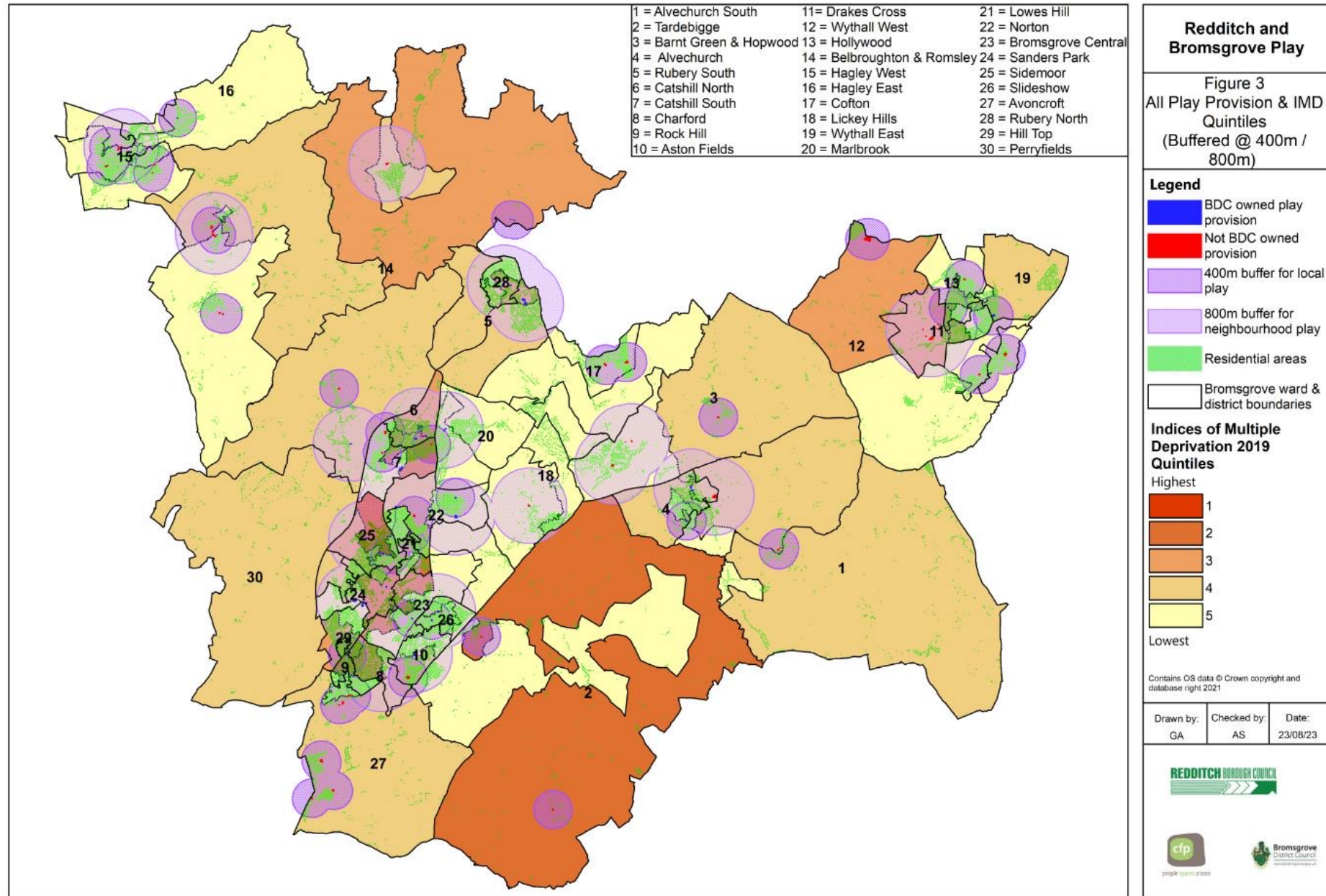
Analysis – All Play Provision

Average number of households without access to play provision within using access model by Settlement Hierarchy.

Hierarchy Name	No. of Households Without Access	Total No. of Households	Total % of Households without Access	Average No.	Average %
Main Town	521	15,456	3.4%	52	3.7%
Large Settlements	3206	18,957	16.9%	229	17.6%
Small Settlements	4381	9783	44.8%	730	45.8%
Total	8108	44,196	18.3%	270	18.6%

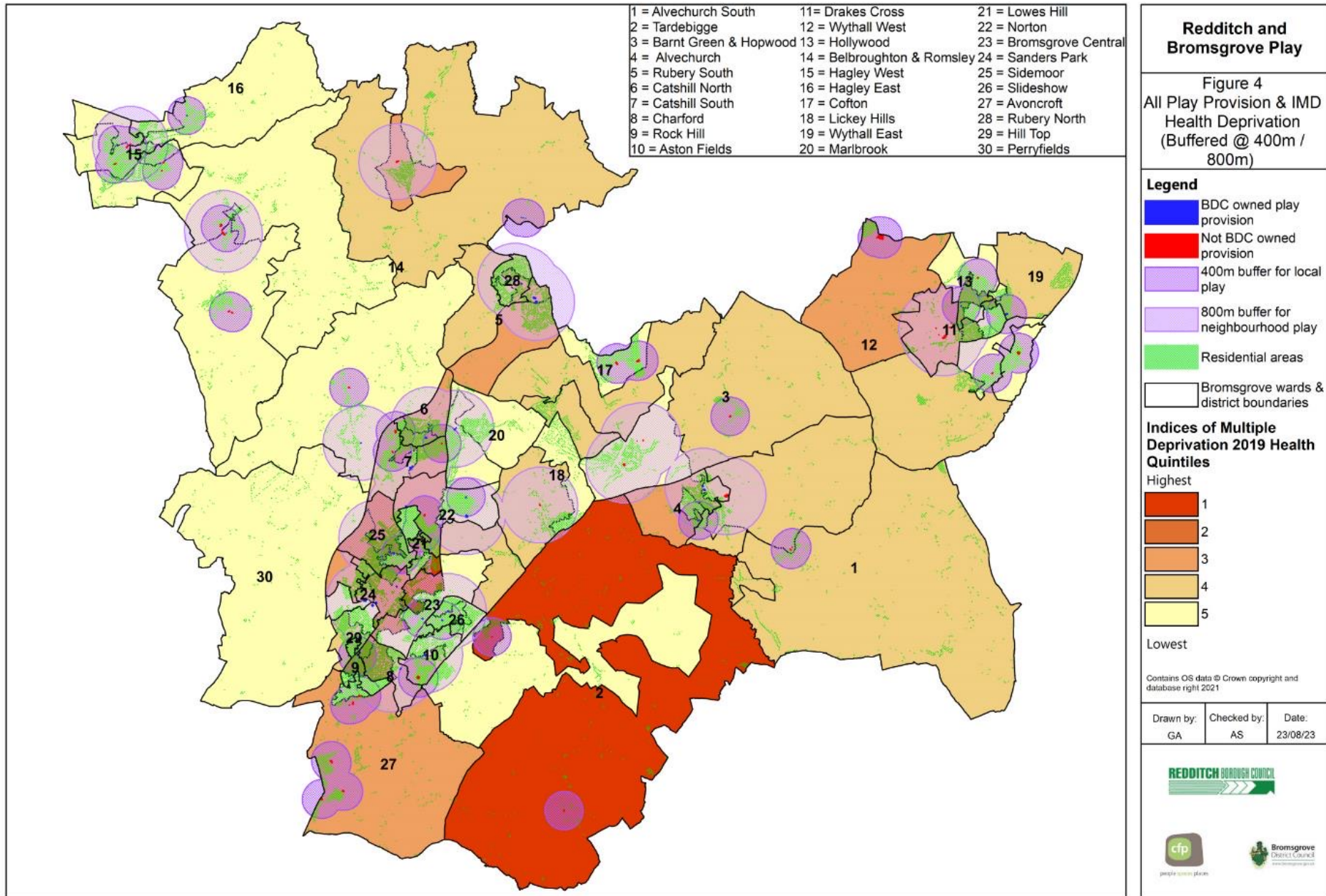
Accessibility Model & IMD

All households in the top 20% most deprived LSOAs have access



Accessibility Model & Health Deprivation

9.3% of households in the top 20% most health deprived don't have access.



Analysis

Households in top 20% most health deprived without access to play provision using access model by ward:

Ward	No	%
Tardebigge	471	32.1%
Lowes Hill	279	17.8%
Bromsgrove Central	3	0.2%
Sanders Park	0	0.0%
Alvechurch South	0	0.0%
Alvechurch Village	0	0.0%
Aston Fields	0	0.0%
Avoncroft	0	0.0%
Barnt Green & Hopwood	0	0.0%
Belbroughton & Romsley	0	0.0%
Catshill North	0	0.0%
Catshill South	0	0.0%
Charford	0	0.0%
Cofton	0	0.0%
Drakes Cross	0	0.0%
Hagley East	0	0.0%
Hagley West	0	0.0%
Hill Top	0	0.0%
Hollywood	0	0.0%
Lickey Hills	0	0.0%
Marlbrook	0	0.0%
Norton	0	0.0%
Perryfields	0	0.0%
Rock Hill	0	0.0%
Rubery North	0	0.0%
Rubery South	0	0.0%
Sidemoor	0	0.0%
Slideslow	0	0.0%
Wythall East	0	0.0%
Wythall West	0	0.0%

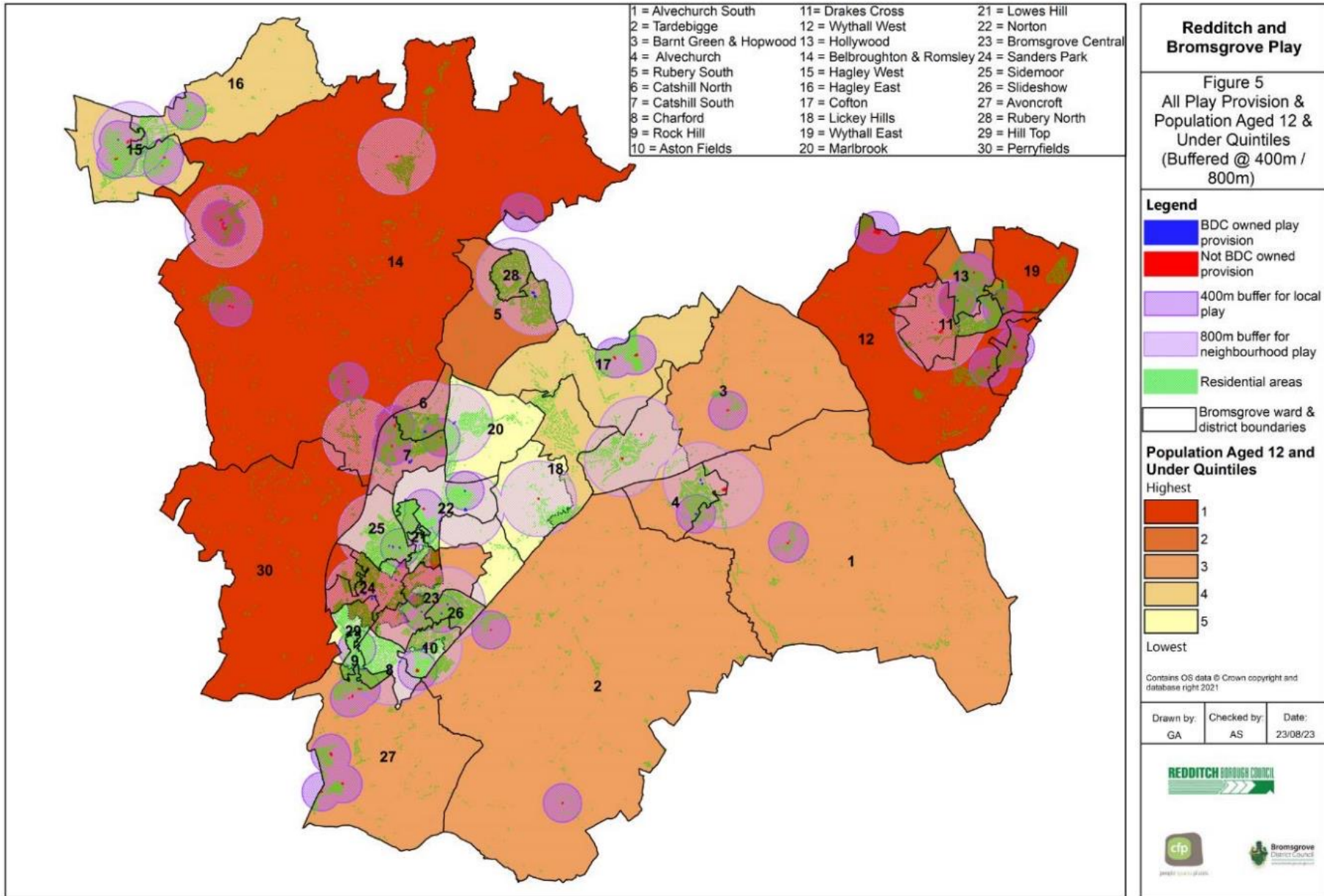
Analysis – All Play Provision

Households in top 20% most health deprived without access to play provision using access model by Settlement Hierarchy.

Hierarchy Name	Wards	No	%
Main Town	Lowes Hill	279	17.8%
	Bromsgrove Central	3	0.2%
	Sanders Park	0	0.0%
	Aston Fields	0	0.0%
	Charford	0	0.0%
	Hill Top	0	0.0%
	Norton	0	0.0%
	Rock Hill	0	0.0%
	Sidemoor	0	0.0%
	Slideslow	0	0.0%
	Large Settlements	Alvechurch	0
Barnt Green & Hopwood		0	0.0%
Catshill North		0	0.0%
Catshill South		0	0.0%
Drakes Cross		0	0.0%
Hagley East		0	0.0%
Hagley West		0	0.0%
Hollywood		0	0.0%
Lickey Hills		0	0.0%
Marlbrook		0	0.0%
Rubery North		0	0.0%
Rubery South		0	0.0%
Wythall East		0	0.0%
Wythall West		0	0.0%
Small Settlements		Tardebigge	471
	Alvechurch South	0	0.0%
	Avoncroft	0	0.0%
	Belbroughton & Romsley	0	0.0%
	Cofton	0	0.0%
	Perryfields	0	0.0%

Accessibility Model & Children Under 12

40.6% of households in the top 20% MSOA's with highest proportions of children aged 12 & under don't have access.



Analysis

Households in top 20% most children aged 12 & under without access to play provision using access model by ward:

Ward	No	%
Wythall West	734	55.6%
Perryfields	340	53.2%
Belbroughton & Romsley	1457	47.5%
Wythall East	474	37.2%
Lowes Hill	279	17.8%
Drakes Cross	3	0.2%
Bromsgrove Central	3	0.2%
Hill Top	0	0.0%
Sanders Park	0	0.0%
Rock Hill	0	0.0%
Alvechurch South	0	0.0%
Alvechurch Village	0	0.0%
Aston Fields	0	0.0%
Avoncroft	0	0.0%
Barnt Green & Hopwood	0	0.0%
Catshill North	0	0.0%
Catshill South	0	0.0%
Charford	0	0.0%
Cofton	0	0.0%
Hagley East	0	0.0%
Hagley West	0	0.0%
Hollywood	0	0.0%
Lickey Hills	0	0.0%
Marlbrook	0	0.0%
Norton	0	0.0%
Rubery North	0	0.0%
Rubery South	0	0.0%
Sidemoor	0	0.0%
Slideslow	0	0.0%
Tardebigge	0	0.0%

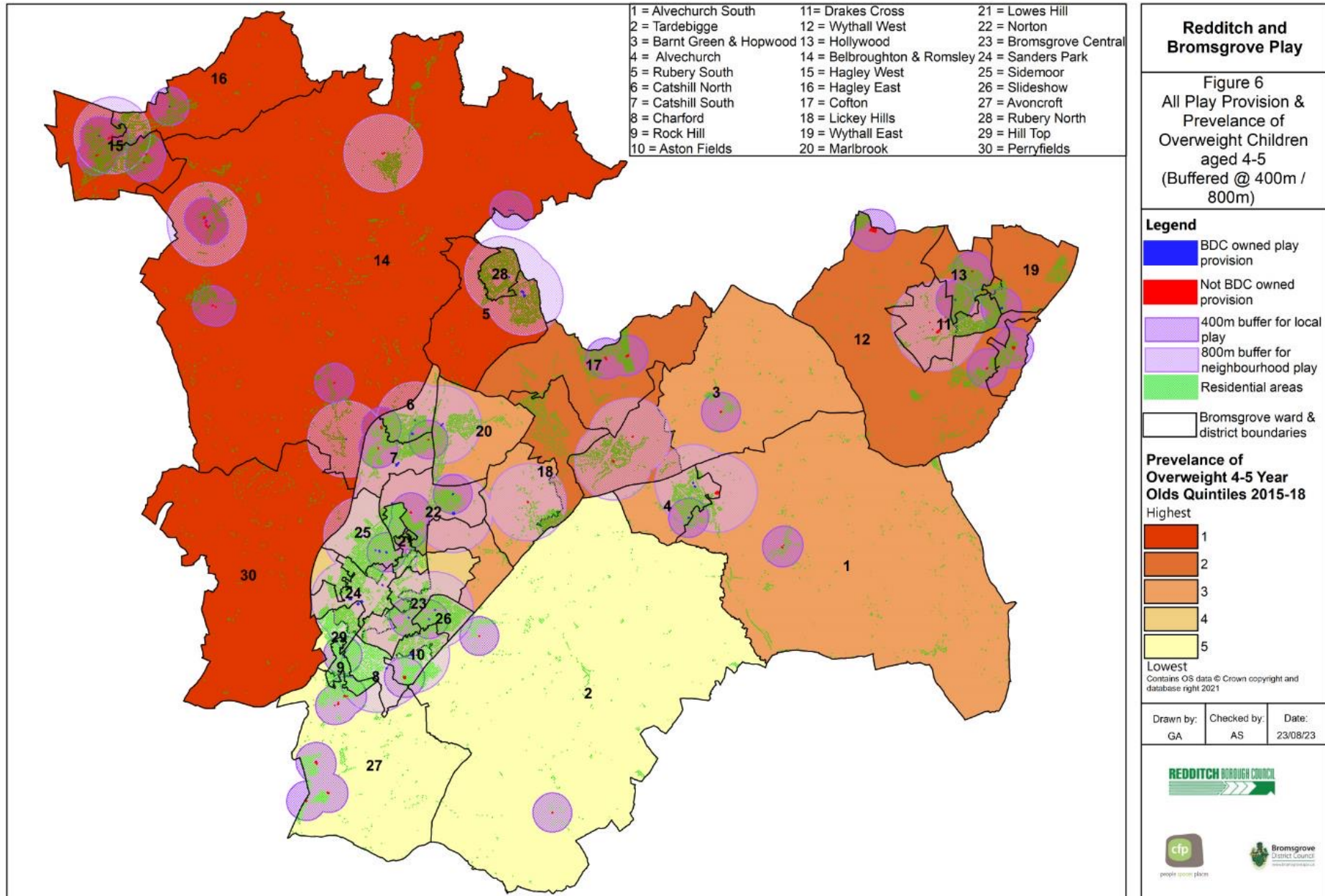
Analysis – All Play Provision

Households in top 20% most children aged 12 & under without access to play provision using access model by Settlement Hierarchy.

Hierarchy Name	Wards	No	%
Main Town	Lowes Hill	279	17.8%
	Bromsgrove Central	3	0.2%
	Sanders Park	0	0.0%
	Hill Top	0	0.0%
	Aston Fields	0	0.0%
	Charford	0	0.0%
	Norton	0	0.0%
	Rock Hill	0	0.0%
	Sidemoor	0	0.0%
	Slideslow	0	0.0%
Large Settlements	Wythall West	734	55.6%
	Wythall East	474	37.2%
	Drakes Cross	3	0.2%
	Alvechurch	0	0.0%
	Barnt Green & Hopwood	0	0.0%
	Catshill North	0	0.0%
	Catshill South	0	0.0%
	Hagley East	0	0.0%
	Hagley West	0	0.0%
	Hollywood	0	0.0%
	Lickey Hills	0	0.0%
	Marlbrook	0	0.0%
	Rubery North	0	0.0%
	Rubery South	0	0.0%
Small Settlements	Perryfields	340	53.2%
	Belbroughton & Romsley	1457	47.5%
	Alvechurch South	0	0.0%
	Avoncroft	0	0.0%
	Cofton	0	0.0%
	Tardebigge	0	0.0%

Accessibility Model & Overweight Children

26.8% of households in the top 20% most overweight 4-5 year olds don't have access.



Analysis

Households in top 20% most overweight children aged 4-5 without access to play provision using access model by ward:

Ward	No	%
Perryfields	340	53.2%
Belbroughton & Romsley	1457	47.5%
Hagley East	146	13.2%
Hagley West	170	8.9%
Rubery South	63	4.7%
Rubery North	0	0.0%
Alvechurch South	0	0.0%
Alvechurch Village	0	0.0%
Aston Fields	0	0.0%
Avoncroft	0	0.0%
Barnt Green & Hopwood	0	0.0%
Bromsgrove Central	0	0.0%
Catshill North	0	0.0%
Catshill South	0	0.0%
Charford	0	0.0%
Cofton	0	0.0%
Drakes Cross	0	0.0%
Hill Top	0	0.0%
Hollywood	0	0.0%
Lickey Hills	0	0.0%
Lowes Hill	0	0.0%
Marlbrook	0	0.0%
Norton	0	0.0%
Rock Hill	0	0.0%
Sanders Park	0	0.0%
Sidemoor	0	0.0%
Slideslow	0	0.0%
Tardebigge	0	0.0%
Wythall East	0	0.0%
Wythall West	0	0.0%

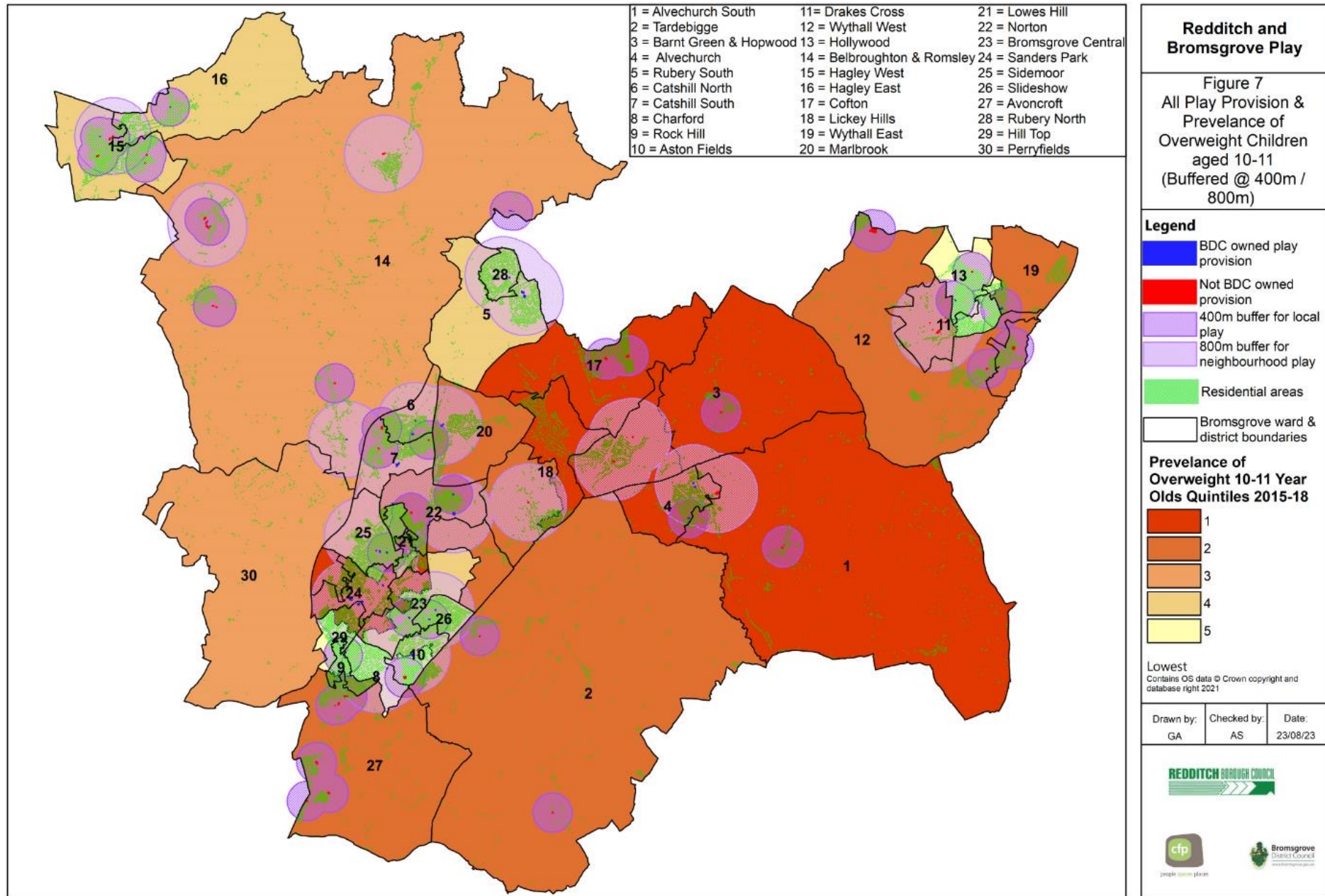
Analysis – All Play Provision

Households in top 20% most overweight children aged 4-5 without access to play provision using access model by Settlement Hierarchy.

Hierarchy Name	Wards	No	%
Main Town	Aston Fields	0	0.0%
	Bromsgrove Central	0	0.0%
	Charford	0	0.0%
	Hill Top	0	0.0%
	Loves Hill	0	0.0%
	Norton	0	0.0%
	Rock Hill	0	0.0%
	Sanders Park	0	0.0%
	Sidemoor	0	0.0%
	Slideslow	0	0.0%
Large Settlements	Hagley East	146	13.2%
	Hagley West	170	8.9%
	Rubery South	63	4.7%
	Rubery North	0	0.0%
	Alvechurch	0	0.0%
	Barnt Green & Hopwood	0	0.0%
	Catshill North	0	0.0%
	Catshill South	0	0.0%
	Drakes Cross	0	0.0%
	Hollywood	0	0.0%
	Lickey Hills	0	0.0%
	Marlbrook	0	0.0%
	Wythall West	0	0.0%
Wythall East	0	0.0%	
Small Settlements	Perryfields	340	53.2%
	Belbroughton & Romsley	1457	47.5%
	Alvechurch South	0	0.0%
	Avoncroft	0	0.0%
	Cofton	0	0.0%
	Tardebigge	0	0.0%

Accessibility Model & Overweight Children

31.5% of households in the top 20% most overweight 10–11-year-olds don't have access.



Analysis

Households in top 20% most overweight 10-11 year olds without access to play provision using access model by ward:

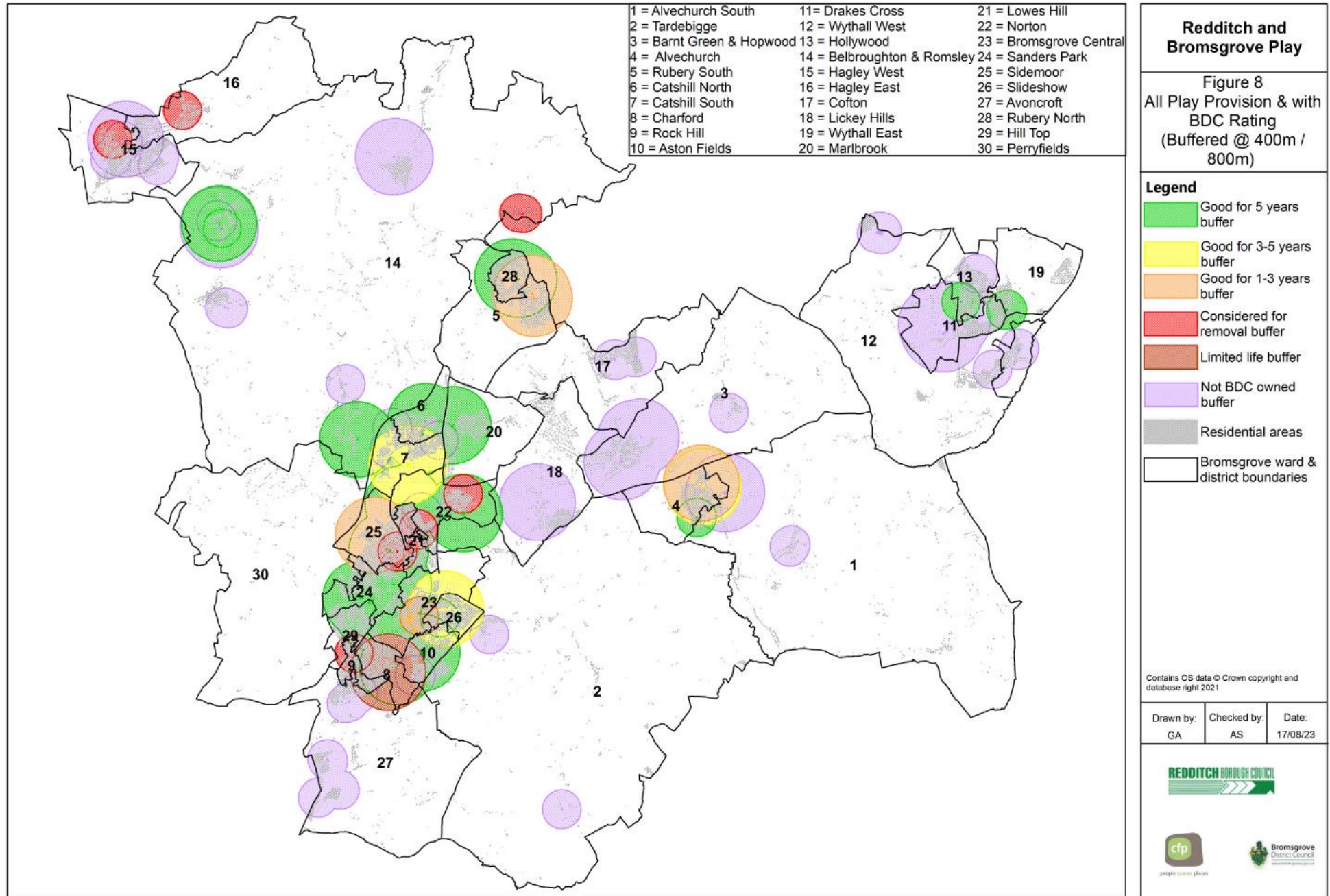
Ward	No	%
Alvechurch South	860	60.7%
Lickey Hills	598	48.6%
Cofton	501	34.8%
Barnt Green & Hopwood	260	20.0%
Lowes Hill	279	17.8%
Alvechurch Village	51	3.9%
Bromsgrove Central	3	0.2%
Hill Top	0	0.0%
Sanders Park	0	0.0%
Aston Fields	0	0.0%
Avoncroft	0	0.0%
Belbroughton & Romsley	0	0.0%
Catshill North	0	0.0%
Catshill South	0	0.0%
Charford	0	0.0%
Drakes Cross	0	0.0%
Hagley East	0	0.0%
Hagley West	0	0.0%
Hollywood	0	0.0%
Marlbrook	0	0.0%
Norton	0	0.0%
Perryfields	0	0.0%
Rock Hill	0	0.0%
Rubery North	0	0.0%
Rubery South	0	0.0%
Sidemoor	0	0.0%
Slideslow	0	0.0%
Tardebigge	0	0.0%
Wythall East	0	0.0%
Wythall West	0	0.0%

Analysis – All Play Provision

Households in top 20% most overweight children aged 10-11 without access to play provision using access model by Settlement Hierarchy.

Hierarchy Name	Wards	No	%
Main Town	Lowes Hill	279	17.8%
	Bromsgrove Central	3	0.2%
	Hill Top	0	0.0%
	Sanders Park	0	0.0%
	Aston Fields	0	0.0%
	Charford	0	0.0%
	Norton	0	0.0%
	Rock Hill	0	0.0%
	Sidemoor	0	0.0%
	Slideslow	0	0.0%
Large Settlements	Lickey Hills	598	48.6%
	Barnt Green & Hopwood	260	20.0%
	Alvechurch Village	51	3.9%
	Hagley East	0	0.0%
	Hagley West	0	0.0%
	Rubery South	0	0.0%
	Rubery North	0	0.0%
	Catshill North	0	0.0%
	Catshill South	0	0.0%
	Drakes Cross	0	0.0%
	Hollywood	0	0.0%
	Marlbrook	0	0.0%
	Wythall West	0	0.0%
	Wythall East	0	0.0%
Small Settlements	Alvechurch South	860	60.7%
	Cofton	501	34.8%
	Belbroughton & Romsley	0	0.0%
	Avoncroft	0	0.0%
	Perryfields	0	0.0%
	Tardebigge	0	0.0%

Play Condition

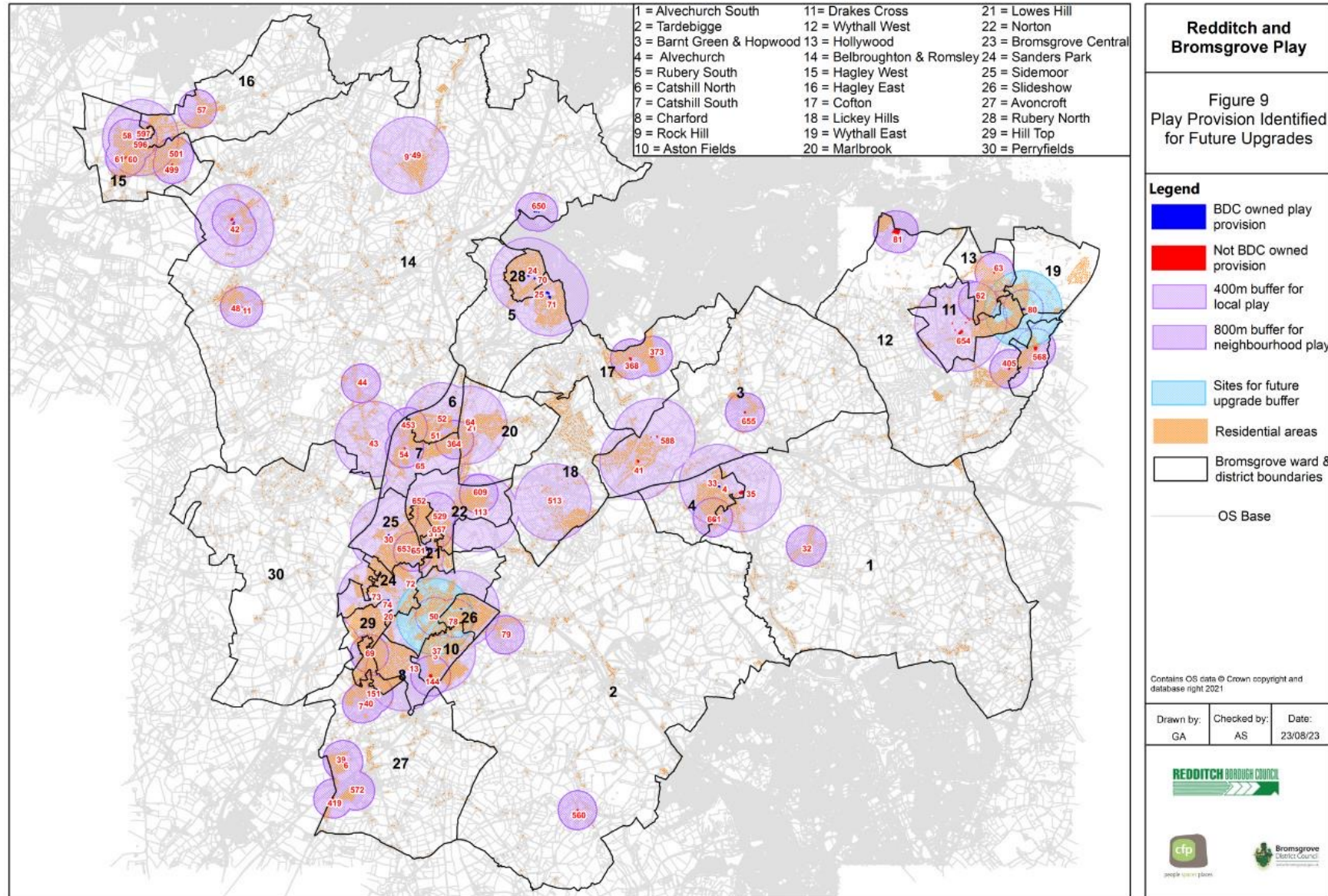


Redditch and Bromsgrove Play

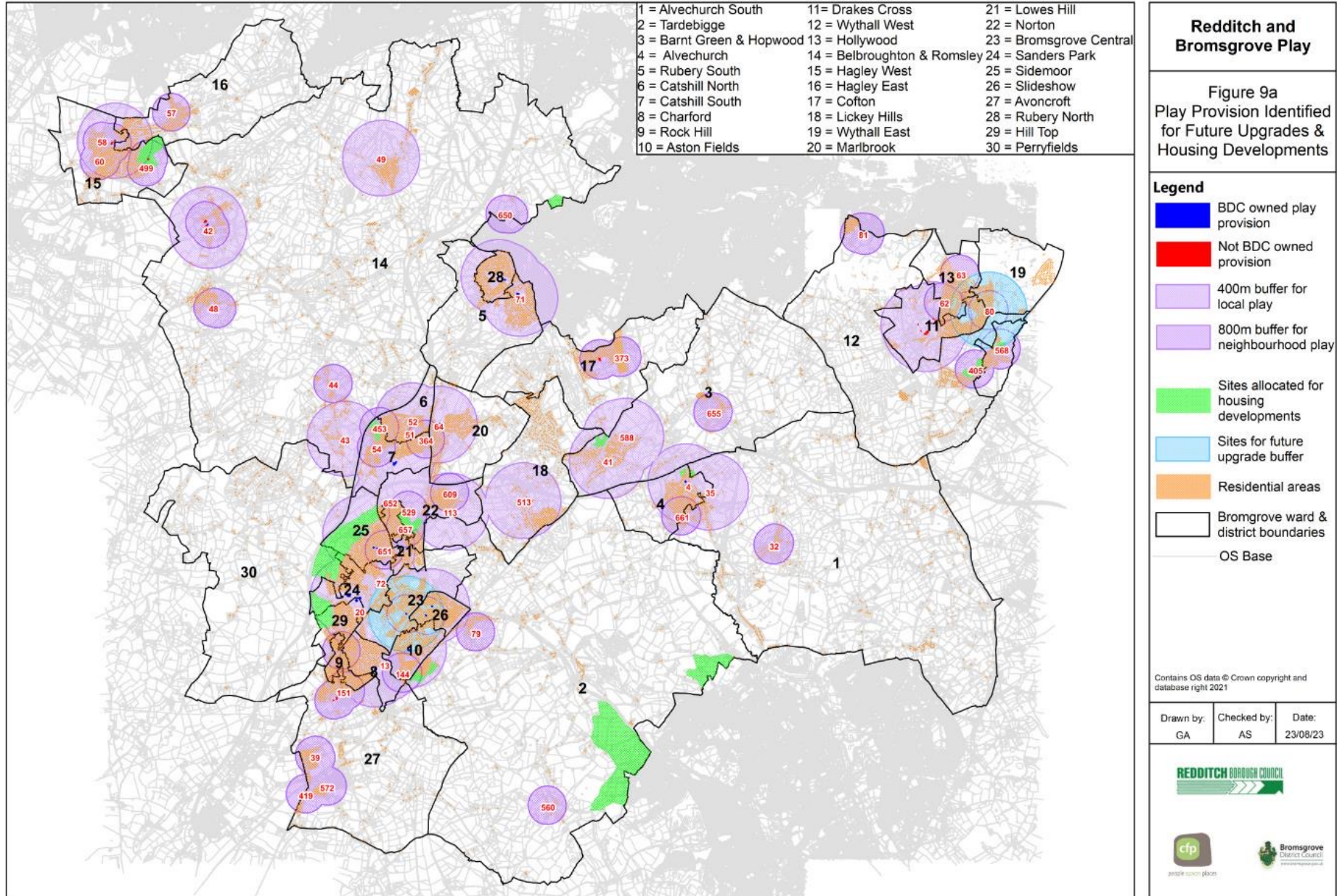
Figure 8
All Play Provision & with BDC Rating
(Buffered @ 400m / 800m)

Future upgrades – enhancement of selected local sites to neighbourhood level

Reducing the number of households who don't have access to 17.4%



Opportunities for addressing deficiencies linked to housing developments



Sites Allocated for Housing Developments



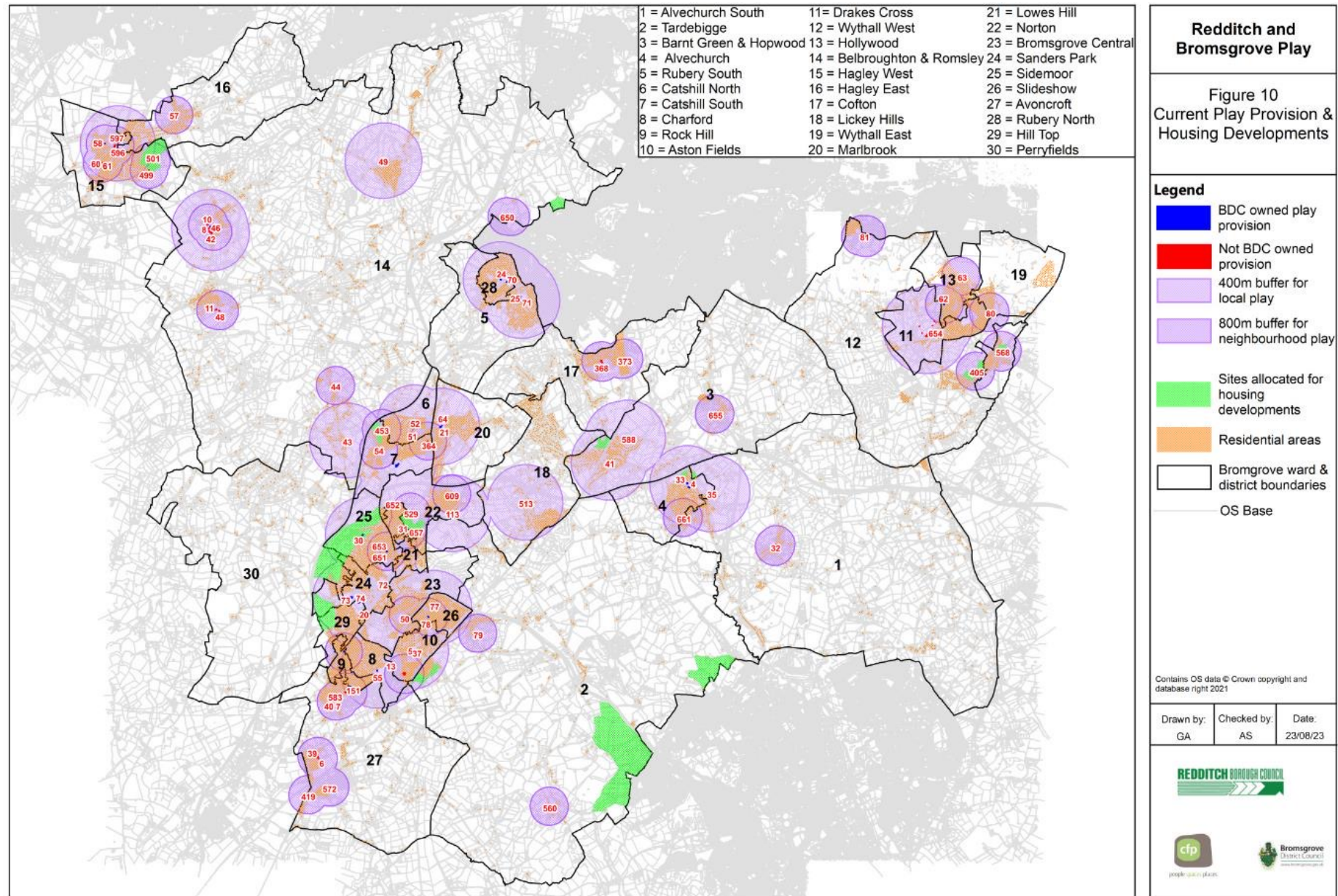
people spaces places

Housing development sites – where no onsite provision of play would be required. The table shows where offsite developer contributions should be directed.

Site ref	Site Name	Play Area ID	Play Area Name	Ownership
BROM1	Norton Farm, Birmingham Road	652 / 113	Barnsley Hall Play Area / Lickey End Recreation Ground	BDC
BROM2	Perryfields Road	30	King George V Playing Field	BDC
BROM3	Whitford Road	74	Sanders Park	BDC
N/A	Birmingham Road and Old Rectory Lane - Alvechurch	33 / 35	Swans Length Play Area / Wiggin Memorial Playing Fields Play Area	BDC
N/A	Alvechurch Land Adjoining Crown Meadow	33 / 35	Swans Length Play Area / Wiggin Memorial Playing Fields Play Area	BDC
N/A	Barnt Green	41/ 588	Barnt Green Parish Council Childrens Play Area Millennium Park / Barnt Green Sports Ground Childrens Play Area Bittell Road Playing Fields	Barnt Green Parish Council
N/A	Catshill	453	Kingcup Close Play Area	3 rd Party
N/A	Hagley	499 / 501	Amphlett Close Play Area / Todd Gardens Play Area*	3 rd Party
N/A	Wagon works/St Godwalds Road	37	Aston Fields Recreation Ground Play Area	BDC
N/A	Wythall, Selsdon Close	568	Selsdon Close*	3 rd Party
N/A	Bleakhouse Farm, Wythall	405	Burnham Road Childrens Play Area*	3 rd Party

* - play sites which will reduce deficiency if enhanced from local to neighbourhood. Hence offsite developer contributions should be directed.

Opportunities for addressing deficiencies linked to housing developments



Sites Allocated for Housing Developments



people spaces places

These housing development sites are entirely within or in close proximity to areas of deficiency to play provision. Consideration should be given to onsite provision if feasible, subject to the play facility meeting minimum standards for either local or neighbourhood provision.

Site ref	Site Name
N/A	Frankley
N/A	Foxlydiate (Redditch Cross Boundary)
N/A	Brockhill (Redditch Cross Boundary)

Summary – Current Accessibility



people spaces places

- The development of the accessibility model has helped to identify areas of deficiency to play provision.
- The most significant gaps are by settlement hierarchy are:
 - Main town – Lowes Hill wards.
 - Large settlements – Lickey Hills, Wythall West and Wythall East wards.
 - Small settlements – the majority of small settlements have significant gaps due to their vast size and sparsely populated residential areas.
- The accessibility model overlayed on deprivation and demographic data has helped to identify where there are areas of deficiency to play, as well as:
 - High levels of deprivation and health deprivation.
 - Large populations of children 12 & under.
 - Large populations of overweight children.
- Where there are high levels of deprivation, 100.0% of households have access to play provision using the access model.

Summary – Current Accessibility



people spaces places

Main Town & Demographic Analysis

- Lowes Hill ward is highlighted as having slight deficiencies in areas of higher levels of health deprivation and a larger population of overweight 10-11 year olds.

Large Settlements & Demographic Analysis

- Lickey Hills ward is highlighted as having significant deficiencies in an area with a larger population of overweight 10-11 year olds.
- Wythall West & Wythall East are highlighted as having slight deficiencies in an area with a larger population of children aged 12 & under.
- Hagley East & Hagley West wards are highlighted as having very slight deficiencies in an area with a larger population of overweight 4-5 year olds.

Small Settlements & Demographic Analysis

- Tardebigge Ward is highlighted as having significant deficiencies in areas with higher levels of health deprivation.

Summary – Current Accessibility



people spaces places

- Perryfields and Belbroughton & Romsley wards are highlighted as having significant deficiencies in areas with a larger population of children aged 12 & under and overweight children aged between 4-5.
- Alvechurch South ward is highlighted as having significant deficiencies in an area with a larger population of overweight 10-11 year olds.

Summary – Opportunities to Address Deficiencies



people spaces places

Opportunities to upgrade from local to neighbourhood provision

The access model is based around the hierarchy of each play space. Play sites that have a greater range or higher quality provision have been classified as neighbourhood level provision and serve a wider area than local level provision. By upgrading the range of play equipment and the quality of provision the gaps in play accessibility can be reduced.

The following play sites have been identified by BDC as sites which have the potential to be upgraded from local to neighbourhood provision in the future.

- 80 - Hollywood Lane Play Area – Good for 5+ years
- 50 - Fordhouse Road Play Area – Good for 1-3 years

- Investment Hollywood Lane should be considered if feasible, and doing so would decrease deficiencies for Wythall East and Hollywood ward. However, this site is still good for 5+ years.

Summary – Opportunities to Address Deficiencies



people spaces places

Opportunities through Housing Development

- Opportunities to decrease deficiencies through sites allocated for housing developments have also been considered, where funding could be used to enhance existing play or create new play provision within the development.
- Housing developments which lie within or in close proximity to areas of deficiency have been identified, namely for Tardebigge, Belbroughton & Romsley and Perryfields wards.
- Future play provision linked to the housing developments identified should be considered if feasible, and as long as it meets the minimum requirements for local or neighbourhood provision.